



FROSTPUNK 2

— COSPLAY GUIDE —



FROSTPUNK 2

COSPLAY GUIDE

CONTENTS

Pilgrims	3
Faithkeepers	7
Evolvers	11
Stalwarts	15



FROSTPUNK 2

COSPLAY GUIDE

PILGRIMS



“SURRENDER TO THE FROST”

The Pilgrims view the Captain's death as a good omen, a sign that the time has come for New London to cast off the oppressive shadow of the generator and the grip of the Stalwarts.

They claim the best way to survive the Great Frost is not to fight it, but to embrace it. They take this to mystical heights, boasting that they see colour in the snow and that the frostland whispers her secrets to them.

And soon, they claim, the whispers will guide us all.



FROSTPUNK 2

COSPLAY GUIDE

PILGRIMS



KEY FEATURES

- ◆ a lot of belts and pipes
- ◆ accessories made out of trash
- ◆ always suited and face-covered with easy-to-remove masks
- ◆ inspired by Fremen from Dune

We recommend to add ventilation holes in the cosplay costume for a better ventilation and breathing.

FROSTPUNK 2

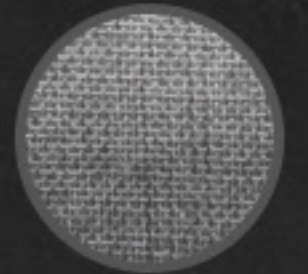
COSPLAY GUIDE

PILGRIMS

COLORS



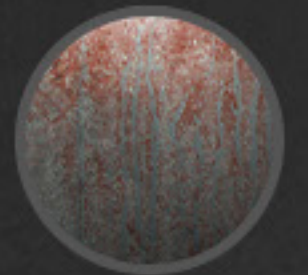
TEXTURES



Linen



Leather



Metal



Knit scarf



Ropes



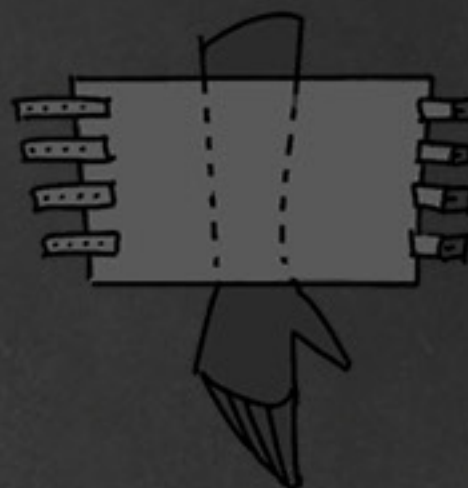
SLIM-BASED SILHOUETTE

Covered with bulky scarfs and rugs.



CUSTOM MASK

Made from scraps and pieces of leather and fabric, it is tailored to be a perfect fit.



HAND WARMERS FOR WRISTS

Provides heat, while leaving fingers unrestricted.

FROSTPUNK 2

COSPLAY GUIDE

PILGRIMS



LAYERED SCARFS

Essentially a bunch of "chimneys", made from a sturdy fabric.



BELTS

A bunch of belt parts placed in different parts of the fabric makes it possible to combine multiple costumes into a tent.



CRAMPONS

Can be easily removed for walking in the city.



FROSTPUNK 2

COSPLAY GUIDE

FAITHKEEPERS



“ONE FLOCK UNDER THE GENERATOR”

The Faithkeepers uphold “the Faith” established by the Captain to keep the City together during the trying times of the Great Storm. Since his death, they worship his memory and endeavour to continue what they believe to be his legacy.

They preach that through hard work and prayer, New London can be turned into a green paradise where all citizens will live equally under the protection of the Holy Generator.

All, that is, except those who blaspheme and defile its warmth, for them a cold hell awaits.



FROSTPUNK 2

COSPLAY GUIDE

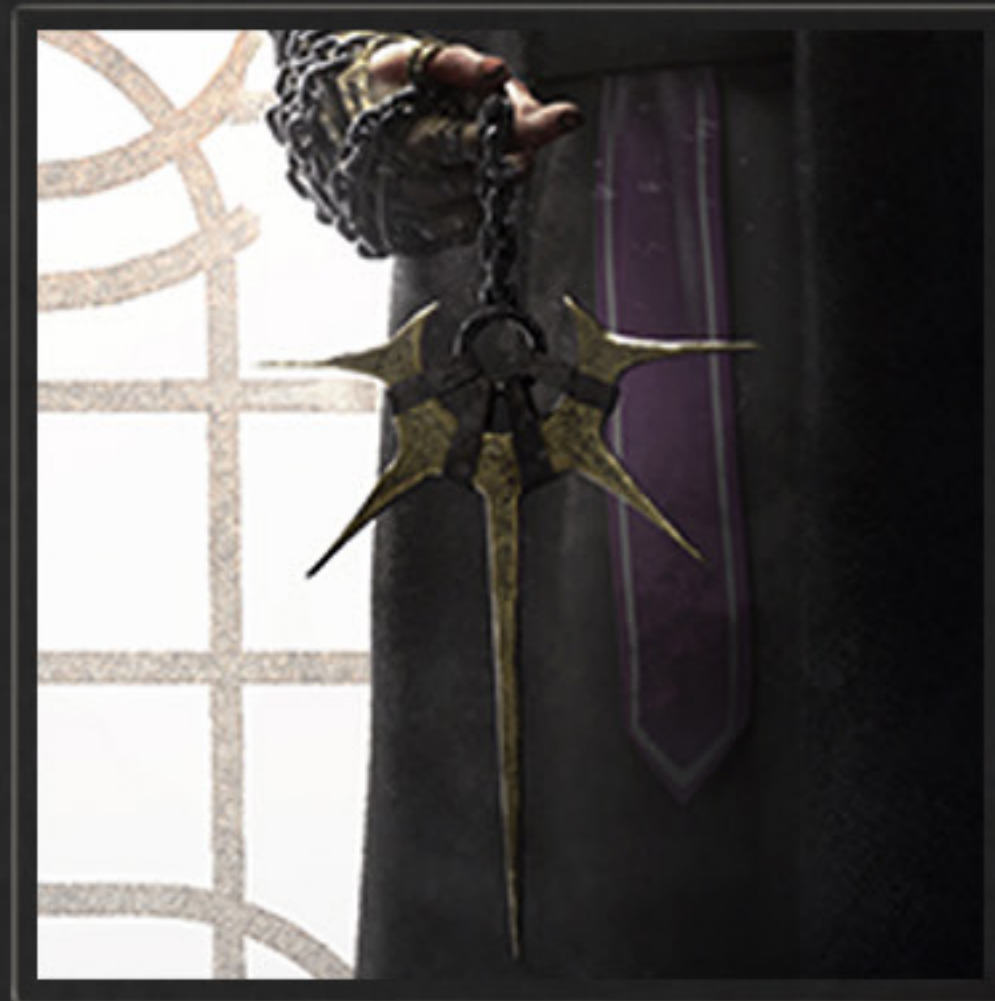
FAITHKEEPERS



KEY FEATURES

- ◆ one outfit among the whole faction
- ◆ rough fabrics with several layers
- ◆ only the purple sash is smooth satin
 - ◆ modestly braided hair
- ◆ pale skin with circles under eyes
 - ◆ scarred faces
- ◆ hands wrapped with ropes

We recommend to add ventilation holes in the cosplay costume for a better ventilation and breathing.



FROSTPUNK 2

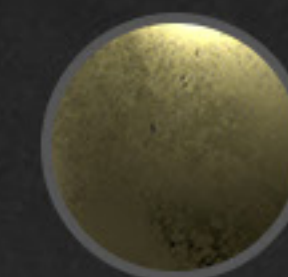
COSPLAY GUIDE

FAITHKEEPERS

COLORS



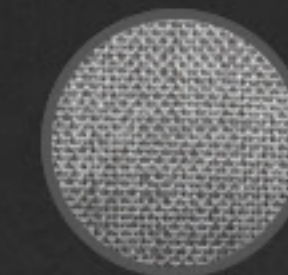
TEXTURES



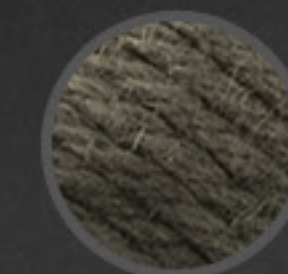
Metal



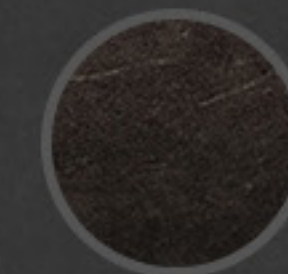
Satin



Linen



Rope



Leather



LAMP

TASSEL

LEATHER BOOTS



BRAID

SYMBOL
OF FAITH



FROSTPUNK 2

COSPLAY GUIDE

FAITHKEEPERS



STRAIGHT SILHOUETTE



BASE TUNIC

The fabric should be coarse and non-reflective look for linen, hemp etc.



OUTER TUNIC

Also made out of a coarse fabric, should be longer than the tunic.



SASH

The only smooth, shiny part of the outfit - purple satin with a silver outline.



SCARF

Look for a large square or triangular shawl or piece of fabric and drape it over your shoulder.



SLEEVES

The rule on the sleeves is 3-step layering.



FROSTPUNK 2

COSPLAY GUIDE

EVOLVERS



“ONE STEP AHEAD”

The Evolvers view the Captain's death as an opportunity for New London to finally break free from what they consider superstition and dependence on backwards ideals.

They claim that fighting the Frost is a fool's errand and that, instead, we must adapt and change ourselves: forcefully and decisively improve our bodies and remodel our society to allow the strongest to thrive in this new world.

Evolution is coming: why not accelerate it?



FROSTPUNK 2

COSPLAY GUIDE

EVOLVERS



KEY FEATURES

- ◆ slim-based silhouette, covered with big bulky scarfs and rugs
- ◆ prosthetic limbs, eyes and other body modifications
 - ◆ shawls adorned with white diagonal stripes
 - ◆ multiple layers of tunics and scarfs
 - ◆ coarse fabric that maintains the silhouette

We recommend to add ventilation holes in the cosplay costume for a better ventilation and breathing.

FROSTPUNK 2

COSPLAY GUIDE

EVOLVERS

COLORS



BELT HOLDING
A LAMP

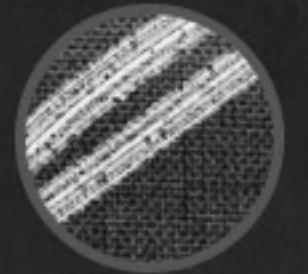
PIPES



OIL LAMP

MODIFIED ARM

TEXTURES



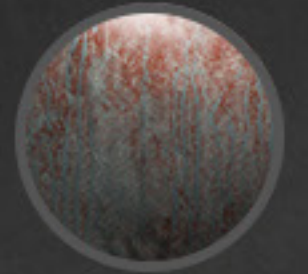
Linen



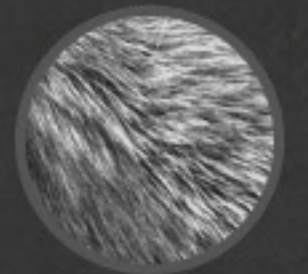
Leather



Knit fabric



Rusty metal



Fur

FROSTPUNK 2

COSPLAY GUIDE

EVOLVERS



SLIM-BASED SILHOUETTE

Covered with bulky scarfs and rugs.



PROSTHETICS

Body modifications are crucial part of evolvers' ideology, they use a variety of prosthetics.



FIRST LAYER

A scarf of a tunic sewn from rugs to keep moisture away.



SECOND LAYER

Made of a coarse fabric, painted with diagonal stripes.



SCARFS

For extra warmth, wrapped around neck and head.



OUTER LAYER

A piece of leather or fur, attached with pins or buttons and secured with a belt.



FROSTPUNK 2

COSPLAY GUIDE

STALWARTS



“THROUGH ORDER, VICTORY”

The Stalwarts are comprised of the old Captains’ most fervent allies, a people forged from the tenets of efficiency and order. They were there when New London first began, survived by the warmth of the Generator, and refused to see her fall.

With everyone marching to the beat of their leader’s drum, the City can truly progress. A well-oiled machine, everyone in their place, heads down, doing as their betters instruct.

After all, a City in order is a City in control, and the Stalwarts are more than comfortable taking control.



FROSTPUNK 2

COSPLAY GUIDE

STALWARTS



KEY FEATURES

- ◆ tailored clothes, fitted to the figure
 - ◆ dark clothes, low contrast
 - ◆ up to three layers on the body
 - ◆ red ribbons attached with metal buttons serving as accents
 - ◆ obligatory faction pin on lapels

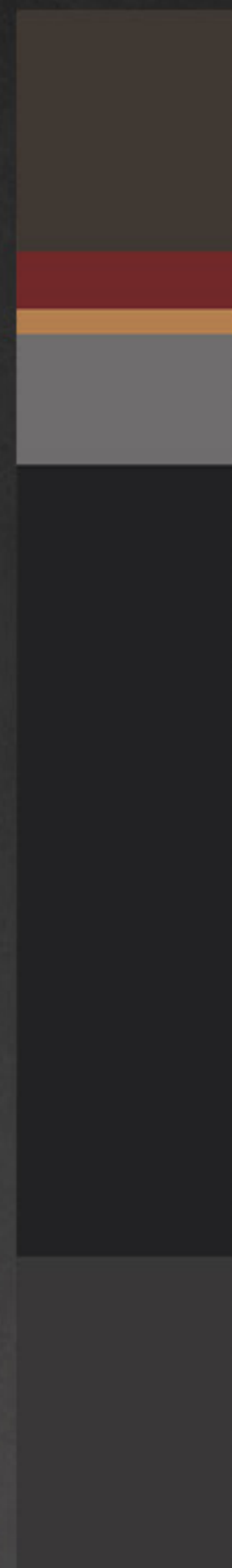
We recommend to add ventilation holes in the cosplay costume for a better ventilation and breathing.

FROSTPUNK 2

COSPLAY GUIDE

STALWARTS

COLORS



IVY CAP

METAL PIN

OIL LAMP

GREY SHEARLING
COLLAR

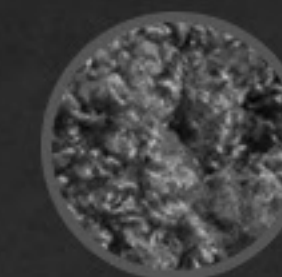
LEATHER
COAT

DIAGONAL RED
STRIPES

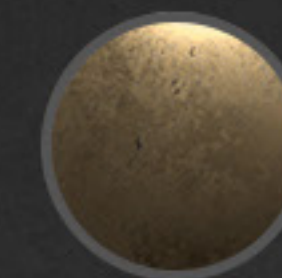
TEXTURES



Leather



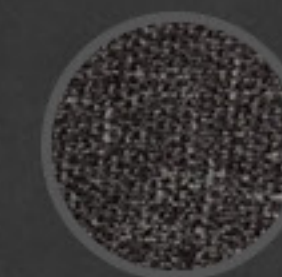
Wool



Metal



Satin



Tweed

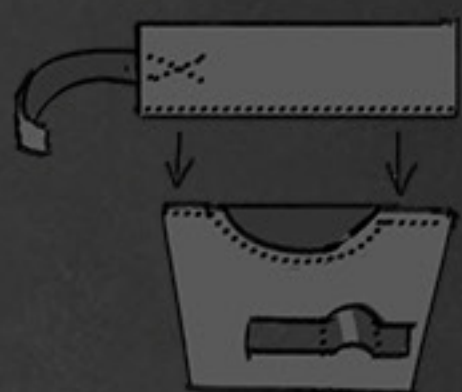


**TAILORED
SILHOUETTE**



SIMPLE BASE LAYER

Usually, turtleneck
sweaters and fitted
pants.



COLLAR

With loops
for lamp pipes.

FROSTPUNK 2

COSPLAY GUIDE

STALWARTS



IVY CAP

Optionally: with red satin
ribbon attached



TAILORED LEATHER COAT

With red satin ribbons
as accents